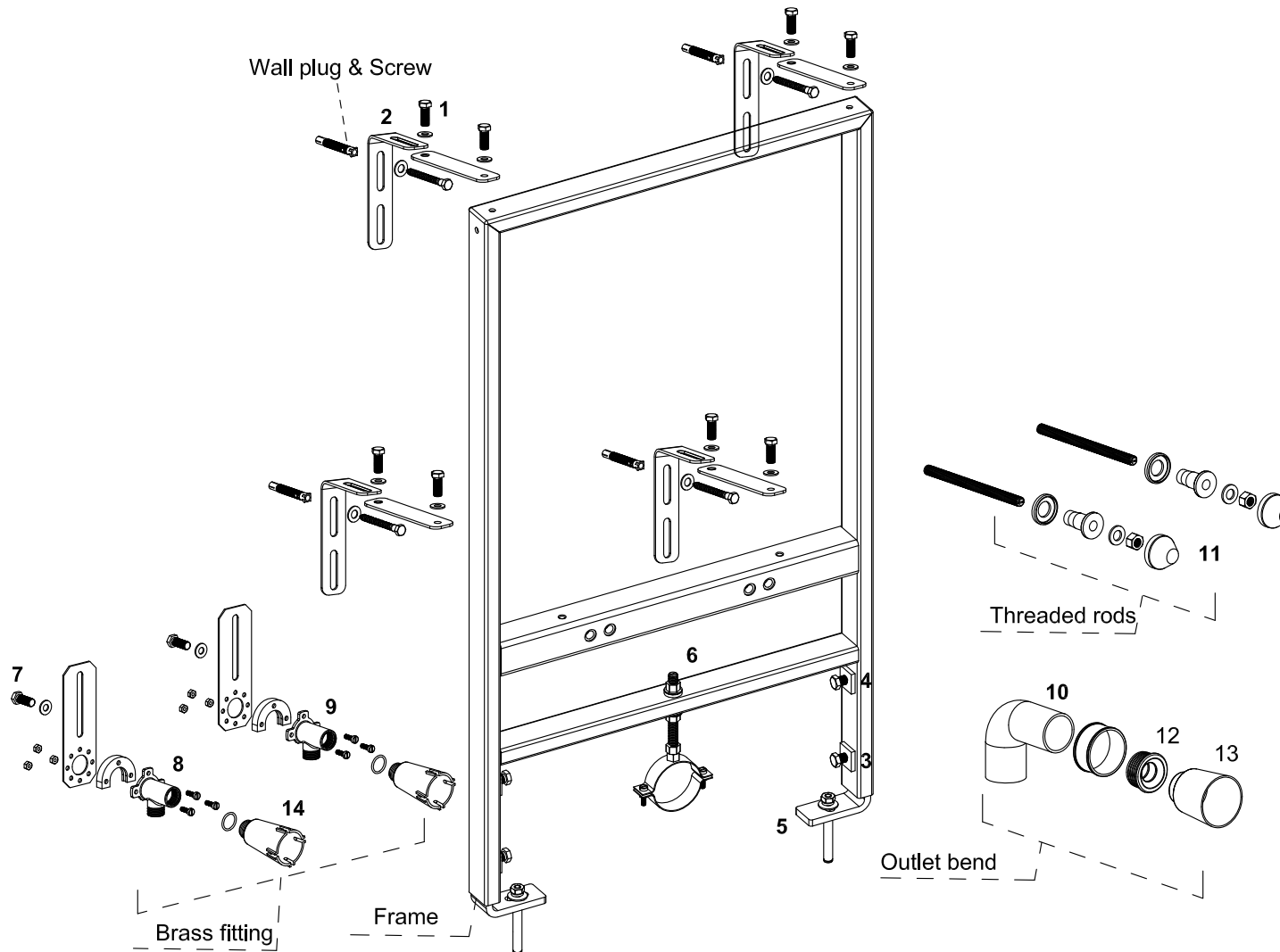


Important:

- Please read these instructions carefully before commencing installation and keep in a safe place for future reference.
- Any plumbing work should be carried out by a qualified professional plumber.
- Check the pack contents to ensure you have all the items required before starting. Ensure you have any additional parts required (bidet, waste, mixer/taps etc).
- You must ensure there is access to the connections behind any partition walls.

Safety Advice & Warnings:

- If any of the components are damaged or missing, do not install and contact manufacturer immediately.
- The manufacturer shall have no responsibility for failures resulting from improper installation.
- Check for hidden pipe work and/or cables before drilling or cutting into walls, floors or ceilings.
- Use wall/floor fixings that are suitable for your wall/floor types and are strong enough for the purpose.
- DO NOT attempt to lift heavy items by yourself - LIFT WITH CARE. Keep children and pets away from the installation area.
- Wear safety glasses and gloves when installing.
- Keep your working area clean and tidy.
- Always follow the safety instructions provided with tools. DO NOT carry sharp tools in your pocket.
- This product should not be discarded with normal household waste, but taken to your local collection centre for recycling.
- Please correctly dispose of packaging properly after installation, recycle where possible.

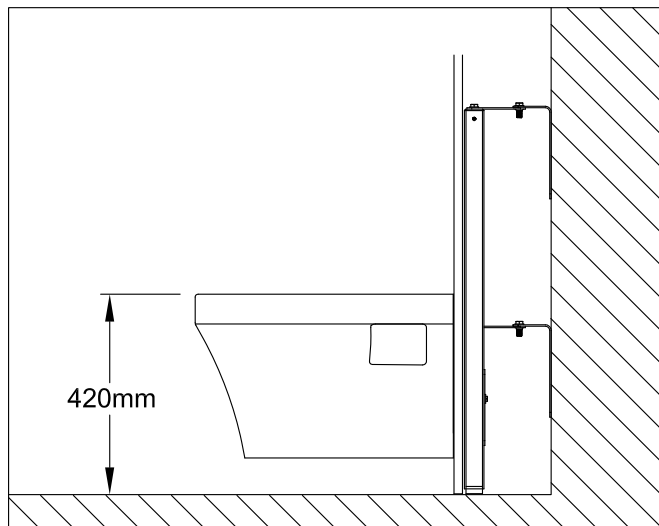


WC Support Frame Parts

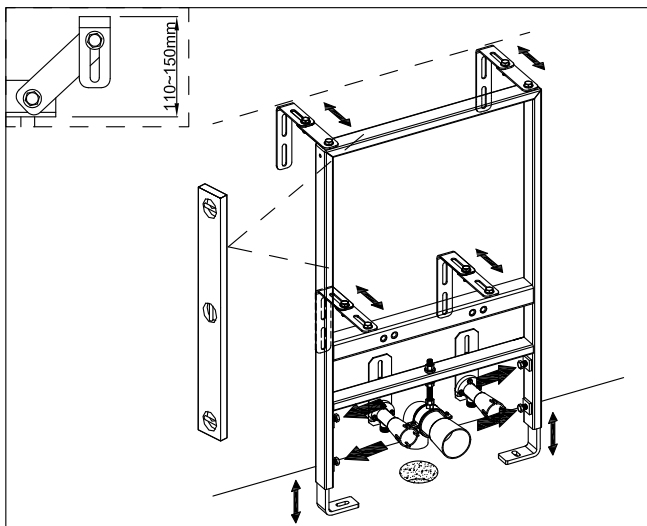
1. Wall Adjustment Bolts x8
2. Wall Brackets x4
3. Height Adjustment Bolts x2
4. Cross Bar Support Height Adjustment Bolts x2
5. Floor Brackets x2
6. Connection Support Bar Bolt x1
7. Connection Height Adjustment Bolts x2
8. Hot Water Inlet Elbow x1
9. Cold Water Inlet Elbow x1
10. Waste Outlet Elbow x1
11. Bidet Fixing Bolts, Nuts, Washers & Covers x2
12. Waste Pipe Seal
13. Blanking Plug x1
14. Blanking Plugs x2

Items & Tools Required

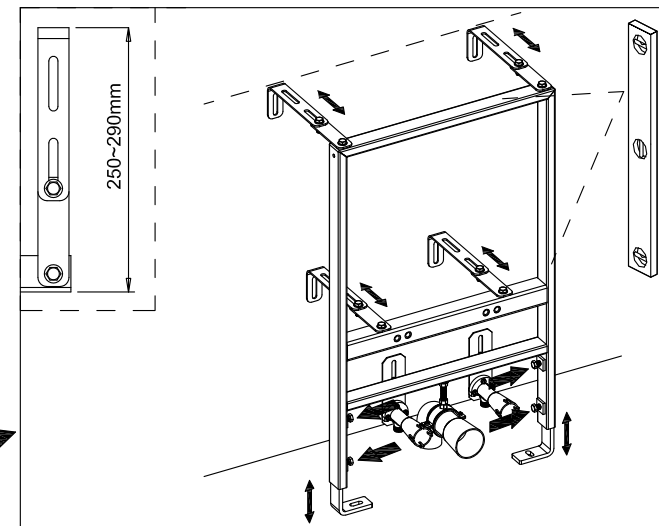
Bidet, Waste Fittings, Mixer/Taps, Suitable Wall/Floor Fixings. .
Plumbing Tools, 13mm & 17mm Spanners, Spirit Level, Drill, Tape Measure, Flatblade Screwdriver, Saw (for pipework).



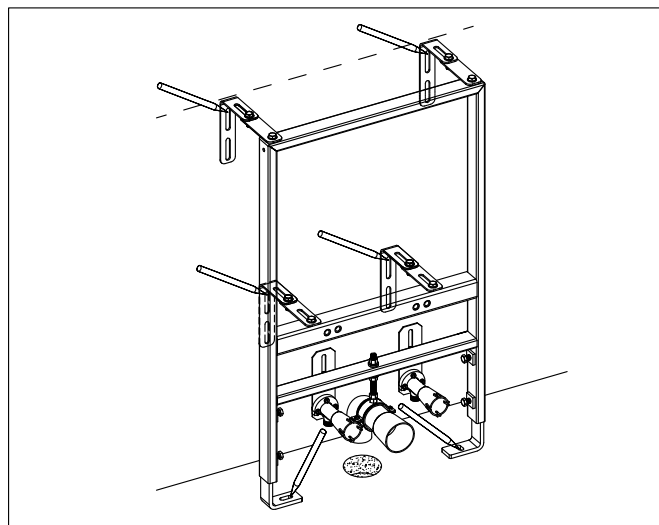
1: Plan the position of the bidet. The recommended bidet height is 420mm. The maximum height will depend on the bidet that is used and the end user requirements. The distance from the wall may depend on the space requirements for a cistern if a toilet is being installed in the same run.



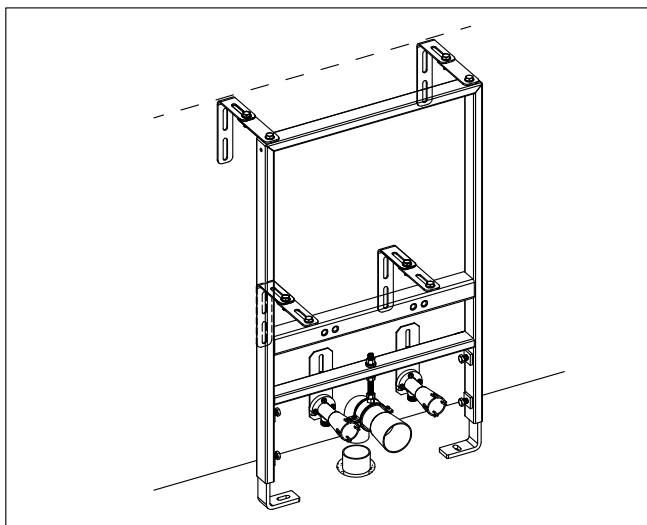
2: Connect the parts onto the frame as on page 2. Place the frame against the wall in the required position. Set the required distance from the wall. Loosen the wall adjustment bolts, set to the required distance, check if the frame is vertical & horizontal and retighten the bolts.



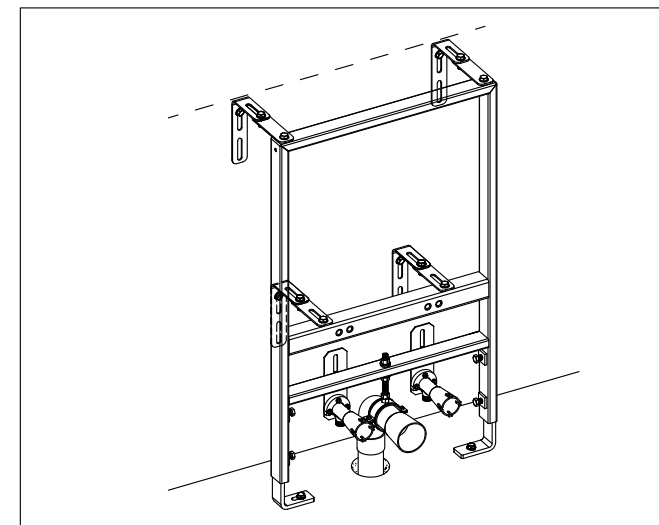
3. If the desired adjustment range is within 250mm to 290mm, please refer to the above diagram for the installation.



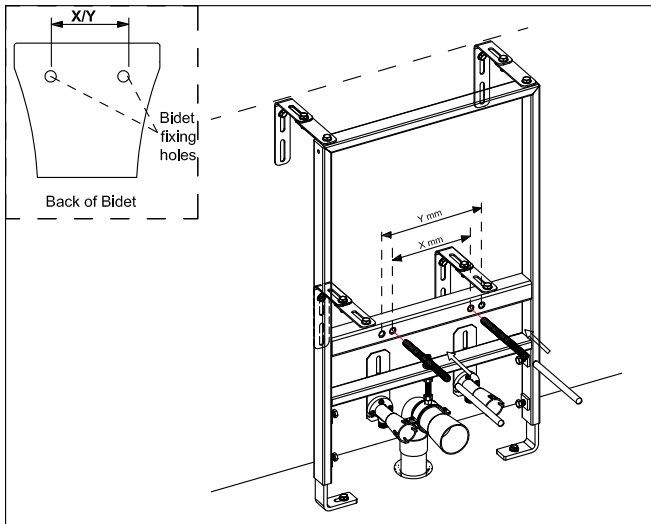
4: Mark the fixing positions on the wall and floor. Remove the frame and drill suitable holes for the fixings.



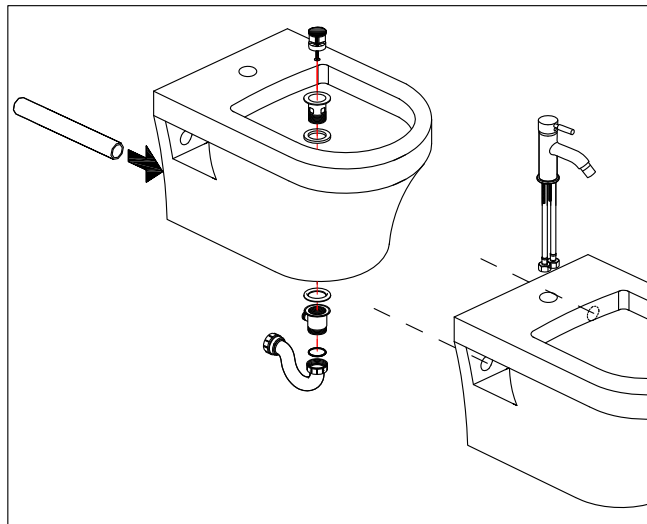
5: Connect the main soil pipe to the soil pipe. Any plumbing work should be carried out by a qualified professional plumber.



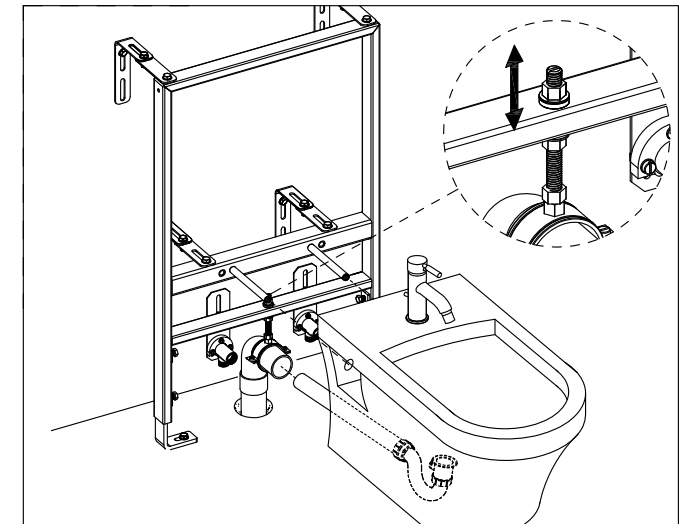
6: Attach the frame to the wall and floor using suitable fixings. Check the frame is level in all directions.



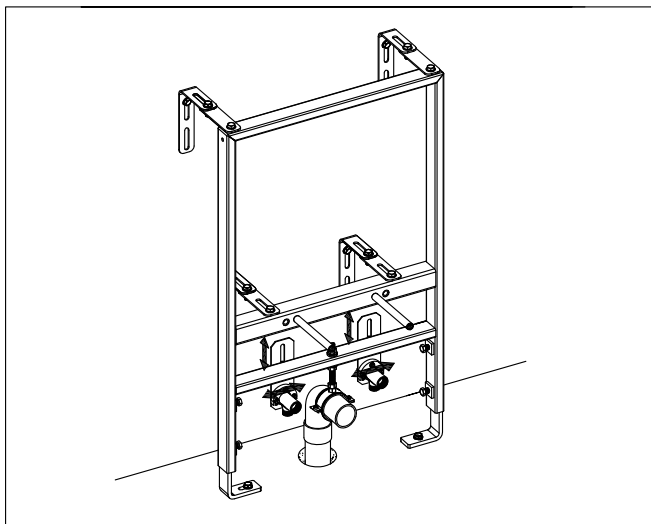
7: Measure the distance 'X' between the centres of the bidet fixing holes. Insert the bidet fixing bolts into the holes that match the bidet fixing holes. The fixing bolts can be adjusted (in or out) using a large flatblade screwdriver to the length required - avoid them projecting too much. Insert the bolt sleeve into the bolt.



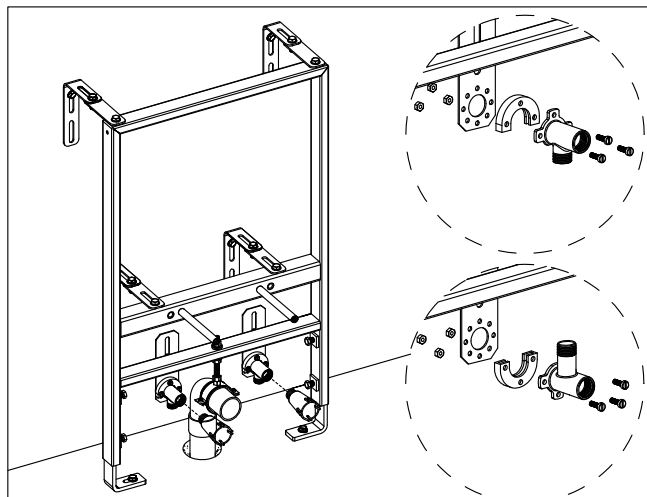
8: Attach the trap, pop-up waste, waste pipe and mixer/tap, to the bidet.



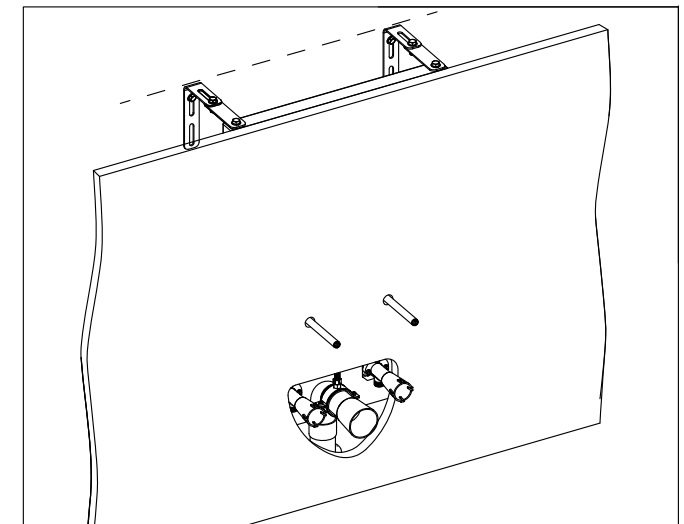
9: Carefully lift and position the bidet onto the bidet fixing bolts. Loosen the connection support bar bolt, set the waste outlet elbow to the required height to line up with the pan waste outlet. Retighten the bolts and remove the bidet.



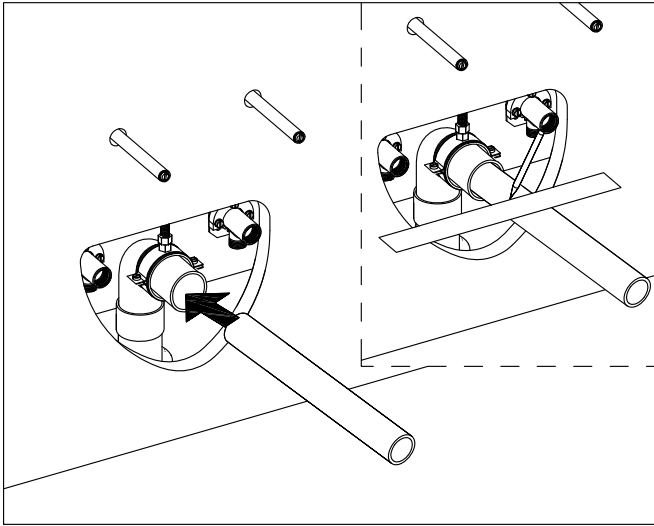
10: Loosen the hot and cold inlet elbows (using the nut at the rear). Set to the required distance apart and height to allow easy connection of the mixer supplies within the shroud of the bidet and retighten.



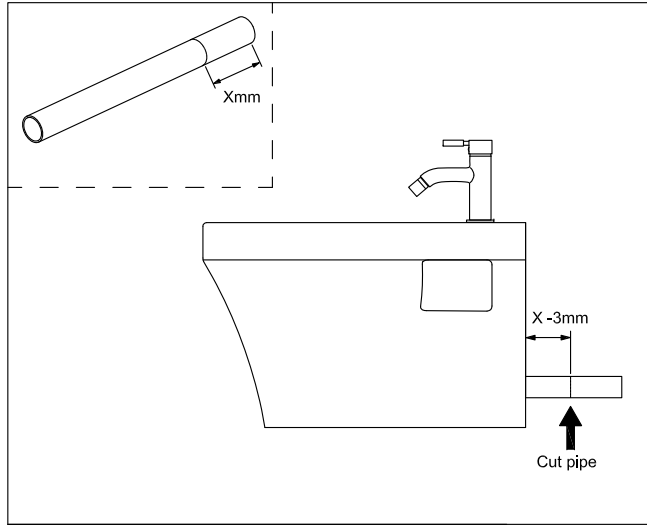
11: Connect the hot and cold pipework to the inlet elbows ($\varnothing \frac{1}{2}$ "), screw the blanking plugs into the outlets. BSP female threaded outlets may need extending (depending on tile thickness etc), using male nipples. The hot and cold inlet elbows can be rotated to suit your pipework. It is essential that isolation valves are fitted in the void at this point.



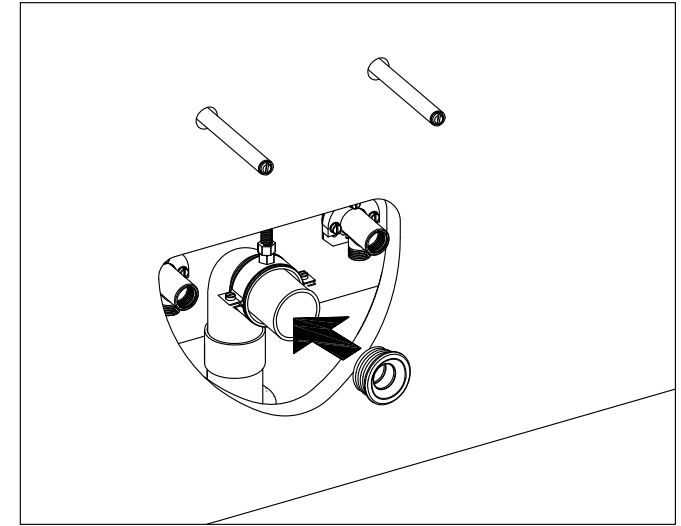
12: Build the partition wall, making the holes for the bolts and pipes. If required, tile the surface or apply the finish now.



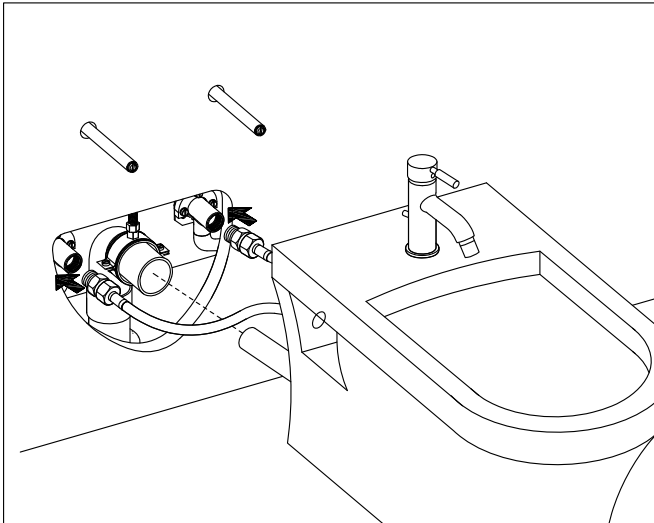
13: Remove the blanking plugs from the bidet frame.
Push fit a 'spare' section of waste pipe fully into the waste outlet elbow.
Place a straight edge flush against the partition wall (as shown) and mark a line on the waste pipe. Remove the waste pipe from outlet elbow.



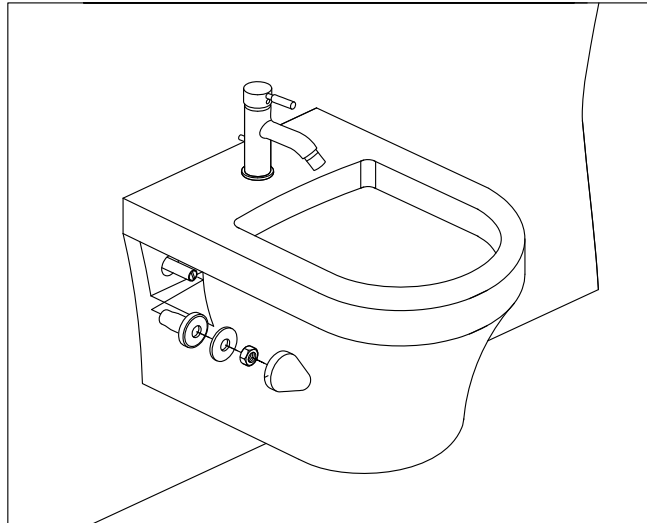
14: Measure the marked length of the 'spare' waste pipe (Xmm).
This measurement MINUS 3mm is the length of waste pipe that is needed to extend from the back of the bidet into the waste elbow.
Cut the waste pipe to length and remove any burrs.



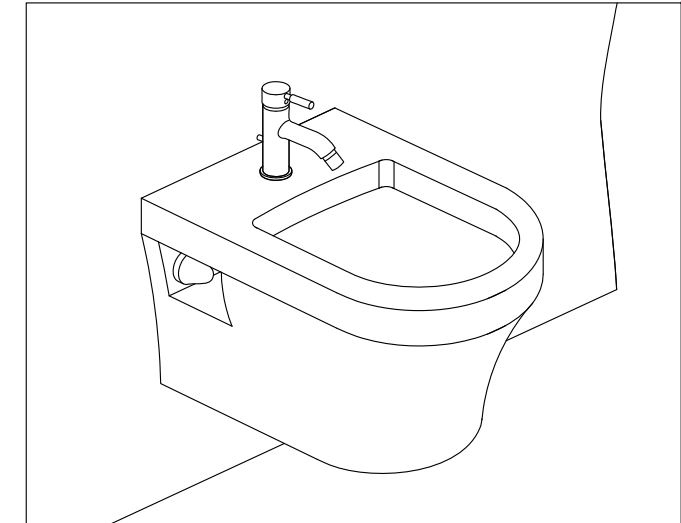
15: Push fit the waste pipe seal into the waste outlet elbow and lubricate the inside.



16: Offer up the bidet and connect the hot and cold flexible pipes to the inlet elbows, adaptors may be required. Fully tighten all connections.
Carefully position the bidet onto the bidet fixing bolts, lining up the waste connections at the same time and push back.



17: On each side of the bidet, place the plastic and metal washers onto the bolts, secure with the nuts and push fit the covers.
Note: The bidet fixing bolts can be lengthened or shortened using a large flatblade screwdriver.



18: Finish the installation by water testing the inlet and outlet connections and isolators in the void.
Note: You must ensure there is access to the connections in the void.
The installation is now completed by fitting the access lid to the void.