

PRODUCT DATA SHEET

BRITTON®



PRODUCT CODE
HOX0370WC

RANGE
Hoxton 2.0

DESCRIPTION
Hoxton 2.0 Bath Spout Chrome

CATEGORY	Brassware
WARRANTY DETAILS	15 Years
COLOUR	Chrome
FINISH APPLICATION	Electroplated
PRIMARY MATERIAL	Brass
INSTALL TYPE	Wall Mounted
PRODUCT WIDTH MM	60
PRODUCT HEIGHT MM	60
PRODUCT DEPTH MM	206
PRODUCT NET WEIGHT KG	0.24
MINIMUM PRESSURE (BAR)	1
MAX WORKING PRESSURE (BAR)	5

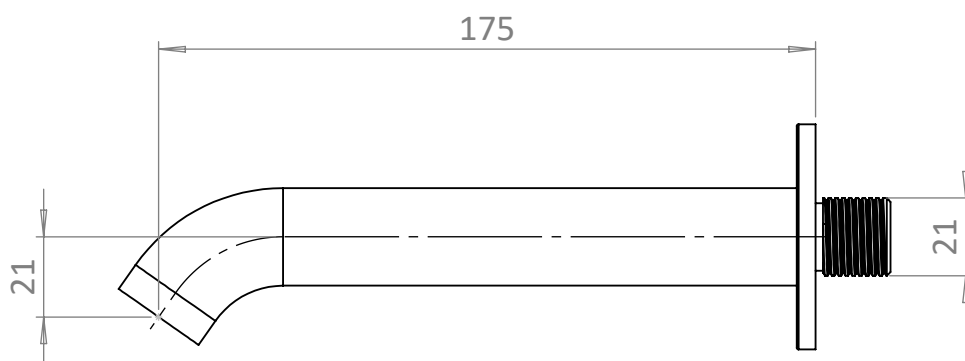
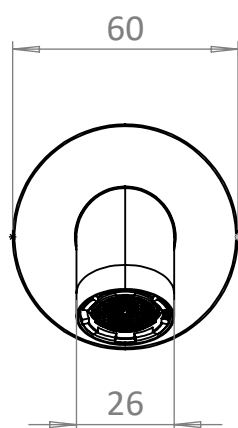
STANDARDS	BS EN 200:2008, BS EN 817:2008
NUMBER OF OUTLETS	1
NUMBER OF FUNCTIONS	1
SPOUT PROJECTION	175
SWIVEL SPOUT	No
INLET CONNECTIONS THREAD	G3/4"
OUTLET CONNECTIONS THREAD	M24x1
FLOW REGULATOR	Neoperl Honeycomb Aerator
WASTE INCLUDED	No
ANTI-SCALD	No
ENERGY SAVING	No
SHOWER HOSE & HANDSET ARE INCLUDED	No

PRESSURE (BAR)	0.2	0.5	1	2	3	4	5
PRIMARY FLOWRATE			9.972	14.684	18.355	21.563	24.431
HANDSET FLOWRATE							
MASSAGE FLOW RATE							
AIR FLOW RATE							
WIRE FLOW RATE							
WATERFALL FLOW RATE							
MIST FLOW RATE							
HANDSPRAY FLOW RATE							

TECHNICAL DIMENSIONS

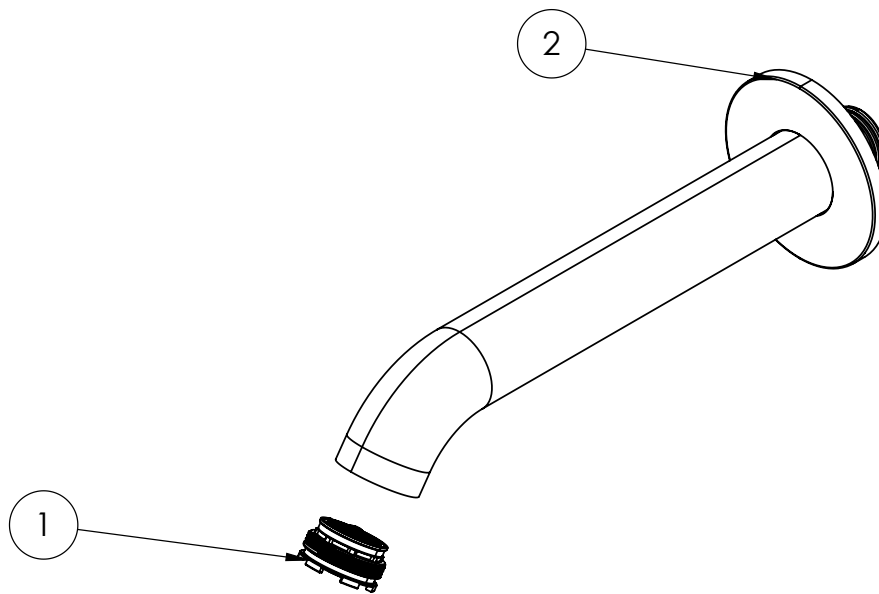
Dimensions in mm unless otherwise specified.

Tolerances (per material type) apply.



SPARES LIST

Only the parts labelled are available as spares.



NUMBER	PART CODE	DESCRIPTION
1	SP1947	Aerator for HOX0370 all finishes
2	SP1948C	Wall plate for HOX0370WC in chrome
	SP1948F	Wall plate for HOX0370WF in brushed brass
	SP1948M	Wall plate for HOX0370WM in matt black